

# PERSPECTIVE

OCTOBER 2025

Published by the Sidney-Shelby County Chamber of Commerce  
101 South Ohio Avenue, Floor 2, Sidney  
[www.sidneyshelbychamber.com](http://www.sidneyshelbychamber.com)



## MEETINGS AND EVENTS

- 1 - **Crossway Farms Presents: Fall on the Farm**  
11/1 2211 West Cisco Road. [crosswayfarms.com](http://crosswayfarms.com)
- 1 **Shelby County Safety Council**  
Topic: OSHA Legal Update  
Speaker: Kevin Hess, Fisher & Phillips LLP  
12:00—1:00 p.m.—Wilson Health, 915 West Michigan Street, Professional Building—LL Conference Rooms  
[sidneyshelbychamber.com/events](http://sidneyshelbychamber.com/events)
- 2 **Keith's Deli Presents: Ladies Comedy Night**  
5:00—8:00 p.m.—Keith's Deli, 115 South Ohio Avenue  
[keithsdelisidney.com](http://keithsdelisidney.com)
- 3 - **VanDemark Farm: Lost Land Corn Maze**  
11/2 2401 South Vandemark Road, Sidney—Friday—Sunday  
[vandemarkfarm.com](http://vandemarkfarm.com)
- 3 **Senior Center Trivia Night**  
7:00 p.m.—Sidney Senior Center, 304 South West Avenue  
[srcentersidney-shelby.com](http://srcentersidney-shelby.com)
- 3 **Edison State Community College Presents: College & Career Fair**  
9:00 a.m. to 12:00 noon—1973 Edison Drive, Piqua  
[edisonohio.edu/event/2025-10/college-and-career-fair](http://edisonohio.edu/event/2025-10/college-and-career-fair)
- 4 & **Great Sidney Farmer's Market**  
11 8:00 a.m.—12:00 noon—Shelby County Court Square  
[sidneyalive.org/eventscalendar](http://sidneyalive.org/eventscalendar)
- 4 **Johnston Farm and Indian Agency Presents: Autumn Evening on the Farm**  
9845 North Hardin Road, Piqua. [johnstonfarmohio.com](http://johnstonfarmohio.com)
- 5 **Senior Center Singers Fall Concert**  
2:00 p.m.—Senior Center, 304 South West Avenue  
[srcentersidney-shelby.com](http://srcentersidney-shelby.com)
- 6 **Senior Center Presents: Seniomark**  
2:00—4:00 p.m.—Sidney Senior Center, 304 South West Avenue. [srcentersidney-shelby.com](http://srcentersidney-shelby.com)
- 7 - **Keith's Deli Open Mic Comedy Night**  
28 5:00—8:00 p.m.—Keith's Deli, 115 South Ohio Avenue  
Every Tuesday in October. [keithsdelisidney.com](http://keithsdelisidney.com)
- 8 - **Shelby County Historical Society 19th Annual**
- 9 **Downtown Ghost Tours**  
5:30 p.m., 6:00 p.m., 6:30 p.m., 7:00 p.m.  
Shelby County Historical Society, 201 North Main Avenue. [shelbycountyhistory.org](http://shelbycountyhistory.org)
- 8 - **Chamber Coffee with Champions**  
29 8:00 a.m.—8:59 a.m.—every Wednesday.  
The Hive Executive Center, 101 South Ohio Avenue, Lower Level. [sidneyshelbychamber.com/events](http://sidneyshelbychamber.com/events)
- 10 **Johnston Farm and Indian Agency Presents: Johnston Cemetery Tour**  
5:00 p.m. & 7:00 p.m.—\$10.00/person— 9845 North Hardin Road, Piqua. [johnstonfarmohio.com](http://johnstonfarmohio.com)
- 10 **Sidney Alive Presents: Downtown Sidney Annual Chocolate Walk**  
5:30 p.m.—8:00 p.m.—Downtown Sidney  
[sidneyalive.org/eventscalendar](http://sidneyalive.org/eventscalendar)

ADDITIONAL MEETINGS & EVENTS ON PAGE 2

## 2025 ECONOMIC OUTLOOK LUNCHEON PRESENTED BY U.S. BANK IN PARTNERSHIP WITH THE SIDNEY-SHELBY COUNTY YMCA AND THE SIDNEY-SHELBY COUNTY CHAMBER OF COMMERCE

Tuesday, October 14, 2025  
11:30 a.m.—1:15 p.m.

Sidney-Shelby County YMCA, 300 East Parkwood Street

RSVP by October 8 at (937) 492-9122 or [kswartz@sidneyshelbychamber.com](mailto:kswartz@sidneyshelbychamber.com)

### Keynote Speaker:

Terry Sandven,  
Chief Equity Strategist  
at U.S. Bank



Terry Sandven is the Chief Equity Strategist at U.S. Bank Wealth Management, a top 20 wealth manager in the United States. In this leadership role, he guides strategic equity management for Ascent Private Capital Management, U.S. Bank's ultra-high-net-worth unit, and oversees the firm's equity investment policy and strategy. As the primary voice on equity investment, he provides expert insights on market developments and investment opportunities.

### Gain Exclusive Insights Into the Economy's Future

The world economy is shifting fast—are you ready? Join us for an exclusive opportunity to hear Terry Sandven, Chief Equity Strategist at U.S. Bank Wealth Management, share powerful insights into what lies ahead for businesses, markets, and communities in 2025.

As one of the nation's top voices in economic forecasting, Terry will cut through the noise and deliver clear, actionable strategies to help you and your business stay ahead of the curve.

### Why You Can't Miss This Event:

- **Exclusive Access:** Hear firsthand from a nationally recognized strategist shaping investment policy at one of America's top 20 wealth management firms.
- **Practical Guidance:** Walk away with real takeaways you can apply immediately to your business planning and decision-making.
- **Networking:** Connect with Shelby County's top business and community leaders—all over a complimentary lunch.

This isn't just another luncheon. It's a **high-powered conversation** that will shape the way our community navigates the remainder of 2025 and beyond. Seats are limited—reserve your spot today and be part of this high-impact conversation that shapes the future of business in Shelby County.



BE A FORCE  
FOR GOOD.



Professional  
Development  
for Everyone.



Workshop  
Sponsor  
Ashley Himes  
State Farm

Join Our Weekly 59-Minute  
RAPID GROWTH WORKSHOPS

### Topics

- Personal Growth
- Leadership Development
- Business Improvement

### Cost

Included in your  
Chamber membership

### When & Where

**FIRST SESSION - October 8**  
Every Wednesday  
8:00 - 8:59 a.m.  
The Hive Executive Center  
101 South Ohio Avenue, LL

[CoffeeWithChampions.com](http://CoffeeWithChampions.com)

Coffee  
Sponsor

SUPERIOR  
ALUMINUM PRODUCTS

Location  
Sponsor

The Hive  
EXECUTIVE CENTER

## FROM DAWN'S DESK

Celebrate 20 Years of Discover Shelby County – Be Part of Our Milestone Edition!

One of the Chamber's most exciting annual projects is the creation of Discover Shelby County magazine – 2026 will mark our 20th edition!

For two decades, this publication has showcased what makes Sidney and Shelby County such a special place to live, work, and play. With inspiring stories, eye-catching photography, and features that highlight both our community's lifestyle and its world-class employers, Discover has become one of the region's most trusted and engaging resources.

And here's the best part: **our members make it possible.**

Your advertising support has allowed us to consistently produce a high-quality magazine in both print and digital formats, reaching readers locally and well beyond our county line. In turn, your business gains valuable visibility with an audience that's actively looking to connect with the best our community has to offer.

This year, we're making the invitation even more special:

- Every Chamber member will once again receive a **complimentary classified listing** in the 2026 edition.
- For those who want to stand out even more, we offer **full, half, quarter, and eighth-page display ads** – each with live links in the online edition, driving readers directly to your website or Facebook page.
- And to celebrate our 20th year, we're keeping ad rates **frozen at the same level they've been for two decades.**

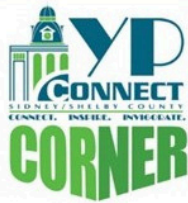
As your Chamber, we're proud to be the county's "number one cheerleader," and we wear that badge with honor. Investing in Discover Shelby County is more than placing an ad – it's joining us in showcasing our community and fueling the momentum that makes this such a great place to call home.

The 2026 edition promises to be our **biggest and best yet** – and we'd love for your business to be front and center in this milestone year. Keep an eye out for your advertising invitation soon, and don't miss the chance to be part of something truly special.



## MEETINGS & EVENTS (CONT'D)

- 10 - Sidney Alive: Downtown Sidney Fall Festival**  
 11 4:00 p.m. Friday—1:00 p.m. Saturday. Shelby County Court Square. [sidneyalive.org/eventscalendar](http://sidneyalive.org/eventscalendar)
- 11 Johnston Farm and Indian Agency: Autumn Evening on the Farm & Cemetery Tour**  
 9845 North Hardin Road, Piqua. [johnstonfarmohio.com](http://johnstonfarmohio.com)
- 11 SCARF Cans for Canines & Felines**  
 9:00-11:00 a.m.—Bob Sargeant & Family Shelby County Animal Shelter, 610 Gearhart Road. [helpshelbycountyanimals.com](http://helpshelbycountyanimals.com)
- 11 Senior Center Annual Trunk or Treat**  
 2:00—4:00 p.m.—Senior Center, 304 South West Avenue [srcentersidney-shelby.com](http://srcentersidney-shelby.com)
- 14 Economic Outlook Luncheon Presented by U.S. Bank**  
 In partnership with the Sidney-Shelby County Chamber and the Sidney-Shelby County YMCA  
 11:30 a.m.—1:15 p.m.—Sidney-Shelby County YMCA, 300 East Parkwood Street [sidneyshelbychamber.com/events](http://sidneyshelbychamber.com/events)
- 14 Senior Center Health Department Flu Shots**  
 9:00 a.m.—12:00 p.m.—Senior Center, 304 South West Avenue. [srcentersidney-shelby.com](http://srcentersidney-shelby.com)
- 16 Chamber Leadership**  
 Topic: Geography, History & People of Shelby County  
 9:00 a.m.—Amos Memorial Library, Lower Level, 230 East North Street. [sidneyshelbychamber.com/events](http://sidneyshelbychamber.com/events)
- 17 - Senior Center Annual Fall Fundraiser**  
 18 9:00 a.m.—Senior Center, 304 South West Avenue [srcentersidney-shelby.com](http://srcentersidney-shelby.com)
- 18 Shelby County Historical Society Presents: Cruise Downtown**  
 5:00—8:00 p.m. [shelbycountyhistory.org](http://shelbycountyhistory.org)
- 18 - Johnston Farm and Indian Agency Presents:**  
**19 Historic Trade Fair & Fall Festival**  
 9845 North Hardin Road, Piqua. [johnstonfarmohio.com](http://johnstonfarmohio.com)
- 19 Arbogast Performing Arts Center Presents: David Phelps & Selah**  
 7:00 p.m.—500 South Dorset Road, Troy. [arbogastpac.com](http://arbogastpac.com)
- 22 Senior Center Blood Drive**  
 10:00 a.m.—4:00 p.m.—Senior Center, 304 South West Avenue. [srcentersidney-shelby.com](http://srcentersidney-shelby.com)
- 23 YPLunchMob at Rainbow Bar & Grill**  
 12:00 noon—126 North Ohio Avenue [sidneyshelbychamber.com/events](http://sidneyshelbychamber.com/events)
- 23 Human Resources Council**  
 Topic: Gamification  
 Speaker: Casey Webster, My HR Extension  
 12:00 noon—Holiday Inn Express & Suites, 450 Folkerth Avenue. [sidneyshelbychamber.com/events](http://sidneyshelbychamber.com/events)
- 24 Senior Center Annual Halloween Dance**  
 7:00 p.m.—Senior Center, 304 South West Avenue [srcentersidney-shelby.com](http://srcentersidney-shelby.com)
- 25 Morgan's Place Cemetery Presents: Food For The Soul IV**  
 5:00 p.m.—Winner Harvest Barn and Family Farm, 7317 State Route 47 West, DeGraff. [morgansplacecemetery.org/events](http://morgansplacecemetery.org/events)
- 25 Arbogast Performing Arts Center Presents: The American Ride—Toby Keith Tribute**  
 7:00 p.m.—500 South Dorset Road, Troy. [arbogastpac.com](http://arbogastpac.com)
- 25 Historic Sidney Theatre Presents: Rocky Horror Picture Show**  
 11:59 p.m.—Historic Sidney Theatre, 120 West Poplar Street [sidneytheatre.org/events](http://sidneytheatre.org/events)
- 29 Workforce Partnership of Shelby County: Annual Partner Update Luncheon**  
 11:30 a.m.—1:00 p.m., Sidney Moose Lodge 1200 Broadway Avenue. [workforcepartner.com](http://workforcepartner.com)
- 31 Halloween 🎃**



CHECK OUT WHAT'S NEW IN THE WORLD OF YPCONNECT!

Looking ahead...

THURSDAY, OCTOBER 23  
 LUNCH MOB AT 12:00 NOON



Moments from our last Committee Meeting & Event...



YP Steering Committee Meeting at Murphy's!



YP Financial Literacy Workshop

Happy Halloween 🦇



## FOUNDATION GRANT SUBMISSION DEADLINE QUICKLY APPROACHING

Each year, the Chamber Foundation invites our member schools and organizations that support the education of Shelby County youth to apply for education grants of up to \$1,000.

The Chamber Foundation plays a vital role in our mission to strengthen Shelby County. Thanks to the generosity of Chamber members, we're able to invest in teacher/instructor-led, enrichment-focused programs that provide unique learning experiences for students—opportunities that may not happen without this support.

Last year, our Foundation Trustees proudly awarded **21 grants totaling more than \$18,000** to organizations educating our youth all over Shelby County.

We would love to see your ideas come to life this year! To request a 2025 grant application, please call our office at (937) 492-9122, email Dawn Eilert at [deilert@sidneyshelbychamber.com](mailto:deilert@sidneyshelbychamber.com) or download the application from our website at [www.sidneyshelbychamber.com](http://www.sidneyshelbychamber.com).

The deadline for application submission is **Wednesday, October 15, 2025**. Don't miss your chance to bring new educational opportunities to the youth!



SPONSOR SPOTLIGHT

**SIDNEY BODY CARSTAR**  
 Auto Body Repair Experts

# WELCOME NEW MEMBER

## SERENITY SENIOR SOLUTIONS

**BUSINESS CATEGORY:** Healthcare

Danielle Kirkland  
607 North Main Street  
New Bremen, Ohio 45869  
(419) 954-8011  
serenityseniorsolution.com



This October, Custom Staffing is putting their best foot forward by partnering with New Choices, Inc. to collect new and unused socks for those in Shelby County who need a bit of extra warmth this winter.

### NEW AND UNUSED SOCK DROP-OFF LOCATION:

October 1—31  
2662 West Michigan Street, Sidney  
8:00 a.m.—5:00 p.m.



### Connect with the Custom Staffing Team:

(937) 652-7823  
mycustomstaffing.com



On Saturday evening, October 25th, Soul'd Out will give their fourth benefit concert for Morgan's Place. The event will include dinner, a quilt auction, a 50/50 drawing, and a raffle for many more prizes. Doors will open at 5:00 p.m. at Winner's Harvest



Barn, 7317 State Route 47, DeGraff. Dinner will begin at 6:00 p.m., entertainment at 7:00 p.m., followed by the quilt auction. Tickets are only \$25.00/person and \$15.00 for youth. Several individuals as well as Monnier and Co. CPAs, and First National Bank of New Bremen are already on board as sponsors. Additional sponsorships are available.

For more information about Morgan's Place Cemetery, tickets and/or sponsorships for the event, contact Greg & Priscilla Wilt at (937) 497-8118 or Nathan & Mollie Verdier at (937) 726-9988.

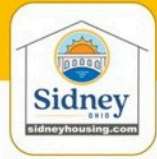
morgansplacecemetery.com

# COMMUNITY IMPROVEMENT CORPORATION OF SIDNEY HOME OWNERSHIP OPPORTUNITY

Through the generous sponsorship of the CenterPoint Energy Foundation, Cargill Corporation and the Sidney-Shelby Economic Partnership, the CIC will build a home on Broadway Avenue in Sidney and make it available to an area family at a reduced cost. The purchaser must complete an application and an interview in order to qualify for the program. Preference will be given to families that are considered low-moderate income based on income and family size. The application can be found at <https://choosesidneyshelby.com/wp-content/uploads/2025/08/Sidney-CIC-Home-Ownership-Program-Application-2025.pdf> or by scanning the QR code below.



732 BROADWAY AVE. | SIDNEY, OH



## ATTENTION: SHELBY COUNTY HOME BUYERS

### NEW HOME AVAILABLE

1,289 sq. ft. 3 BD, 2 BA high-efficiency ranch home by Unibilt Homes, open concept.

Priced below market \$~150,000-160,000's for qualifying buyer\*



Example of Unibilt 3-bedroom ranch in Columbus, Ohio

Download the application:

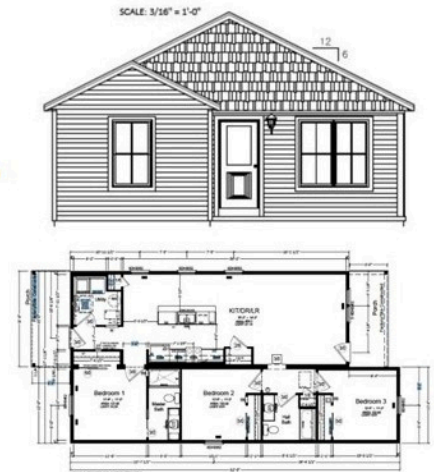
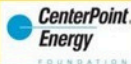


Contact Jim Hill, PH 937-498-9554  
info@choosesidneyshelby.com

\*Occupant owners only. Buyers need complete an application, qualify and secure financing from a bank or mortgage company. Price is approximate and will be finalized at completion, which is estimated to be in the fall of 2025.

This pilot program is brought to you by the Community Improvement Corp. of Sidney, Ohio (Sidney CIC) through the generous funding of the sponsors below. The CIC is a 501(c)(3) charitable organization focused on community revitalization

### FUNDED BY OUR GRANT SPONSORS:



VISIT [SIDNEYALIVE.ORG/EVENTS](https://sidneyalive.org/events) FOR TICKETS!

SPONSORED BY:  
**WINANS**  
CHOCOLATES + COFFEES  
1019 Wapakoneta Ave, Sidney, OH 45365

**FRIDAY,  
OCTOBER  
10TH**

VISIT [SIDNEYALIVE.ORG/EVENTS](https://sidneyalive.org/events) FOR MORE INFO!

**OCTOBER  
10, & 11,  
2025**

**DOWNTOWN  
TRICK OR TREAT!  
COSTUME CONTEST!  
HAY RIDES!  
KIDS ACTIVITY ZONE!**

 Like us on Facebook
 

# SENIOR Center

OF SIDNEY-SHELBY COUNTY

**Are you 50 or older?** Stop in and claim **two FREE visits** and see all our activities, fitness room and available exercise classes! Our membership is only **\$35/year** for Shelby County residents and **\$40/year** for out of county.

304 S. West Avenue, Sidney, Ohio 45365  
 Phone: (937) 492-5266 • email: srcenter@nktelco.net  
[www.srcentersidney-shelby.com](http://www.srcentersidney-shelby.com)



Temp/Contract • Direct Hire • Professional • Skilled Trades

## Need help hiring new employees?

Rob & Lisa Albers, Owners  
 (937) 538-4250 • [ExpressPros.com/SidneyOH](http://ExpressPros.com/SidneyOH)



101 South Ohio Avenue  
 Floor 2  
 Sidney, Ohio 45365  
[www.sidneyshelbychamber.com](http://www.sidneyshelbychamber.com)

PRSRT STD  
 U.S. POSTAGE  
 PAID  
 SIDNEY, OH  
 PERMIT NO. 423



## SOLLMANN ELECTRIC

INDUSTRIAL • COMMERCIAL • RESIDENTIAL

310 E. Russell Road | Sidney, OH 45365  
**P:** 937-492-0346 | **F:** 937-492-4447  
[SollmannElectric.com](http://SollmannElectric.com)

*Committed to  
 Electrical Excellence  
 Since 1973*

WE ARE AN  
 EQUAL OPPORTUNITY EMPLOYER  
**OH LIC 26835**



# WiseBRIDGE

WEALTH MANAGEMENT

**(937)518-1776**

All securities through Money Concepts Capital Corp. Member FINRA/SIPC  
 WiseBridge Wealth Management is not affiliated with Money Concepts Capital Corp



NKT Managed Services

LET US PROVIDE YOUR IT AND SUPPORT

[WWW.NKTELCO.COM](http://WWW.NKTELCO.COM)      1-888-NKTELCO

CHECK US OUT ON FACEBOOK & LINKEDIN  